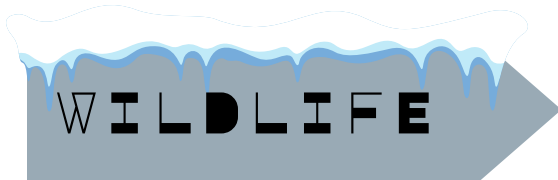


ANTARCTICA FACT FILE

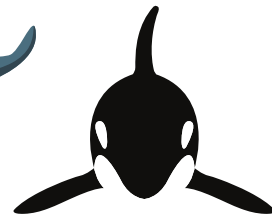
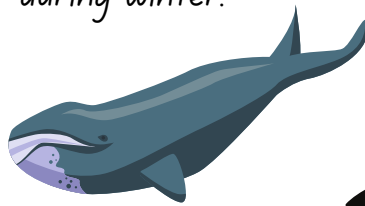
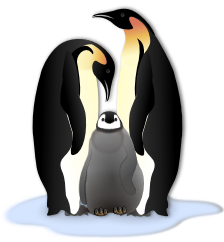
Antarctica is an icy landmass located at the South Pole. It is a continent, not a country, and is used for scientific research and conservation.

Meaning: In Greek, 'antarktike' = opposite to north.

No form of government and no Indigenous population.



Most of the animals that live in Antarctica are there seasonally, as it's too cold to stay there during winter.



CLIMATE

- Coldest, driest and windiest continent on earth.
- 99% of Antarctica is covered in snow and ice. 1% is rocky outcrops.
- Antarctica is a desert. It has very little snow and rainfall.
- Antarctica has only two seasons: Summer and Winter

No trees or bushes.



Ice depth averages 2km thick in East Antarctica.



SIZE

It is the 5th largest continent.

Area: 14.2 million square kms